

# Masport<sup>®</sup>

## EXPORT ROTARY MOWERS

Part Number  
464923

Model  
S16 150ST 3'n1

Engine  
B&S W16 Series 300

Month and Year of First Manufacture - Sept 2015

Starting Serial Number - > 7967070



Issue B.0  
ECN 03250  
March 2016 BH  
REF # 764923S

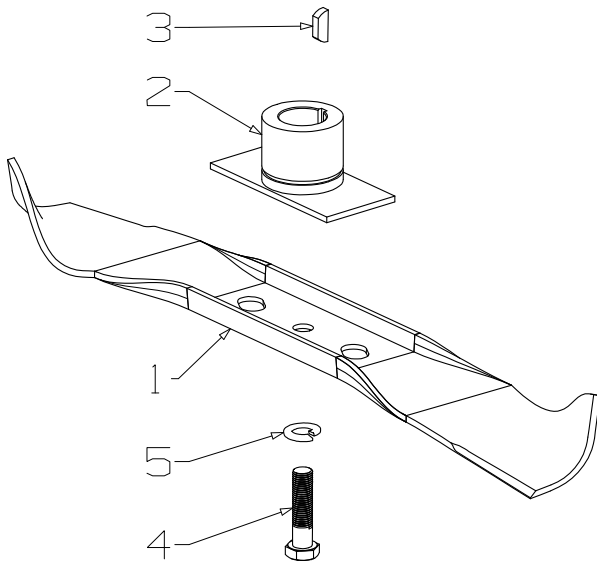


S16 150ST 3'n1  
 Powered by: B&S W16 Series 300

# Masport

Issue B.0  
 ECN 03250  
 March 2016 BH  
 REF # 764923S

## 420mm (16") Blade Assembly

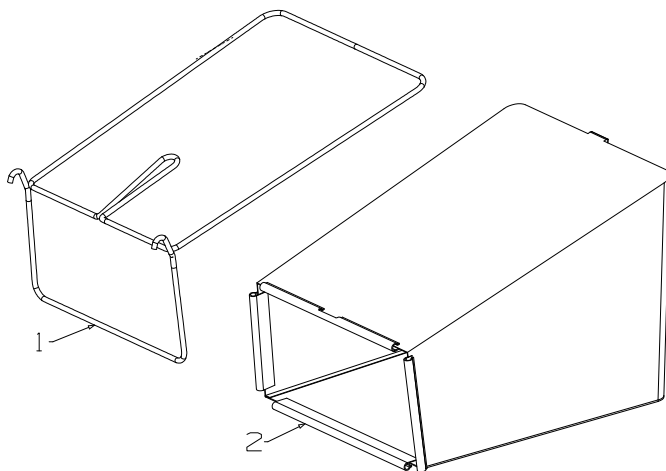


Item	Part	Description	Qty
1	<b>564514</b>	Blade-Bar,420mm	1
2	<b>591106</b>	Driver Assy-Blade, 7/8"	1
3	<b>500636</b>	Key-W/Ruff 5/8"x5/32"x1/4"	1
4	<b>503543</b>	Bolt; Hex NF 3/8"x1.5 NYG8	1
5	<b>500204</b>	Washer; Spg 3/8"	1

An alternative fastening may be used in this assembly

**4 581610** Screw, Set NF 3/8 x 1.25 NYG8 1

## 764512 Catcher Assembly 16" - Fabric



Item	Part No	Description	Qty
1	<b>564496</b>	Frame Assy- Catch, Fabric 16"	1
2	<b>564513</b>	Bag Assembly - Catcher 16"	1

When ordering PLEASE QUOTE PART NUMBER & Description, NOT Illustration No.  
 Determine right or left hand side from standing in operating position (standing at handle).

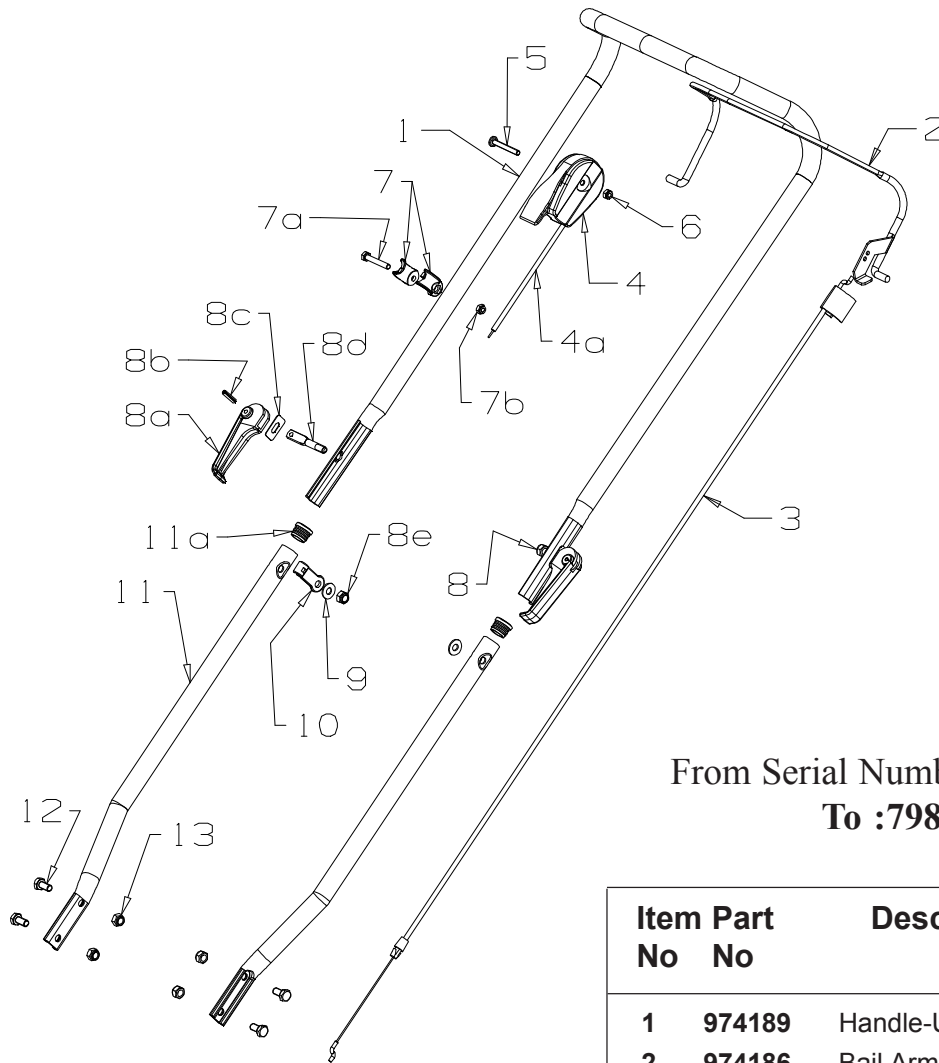
**Bold Text** = Assemblies, Bulleted Text \* = Items included in the Assemblies & may not be available as a spares item.



S16 150ST 3-in-1  
Powered by: B&S W16 Series 300

# Masport

Issue B.0  
ECN 03250  
March 2016 BH  
REF # 764923S



From Serial Number - **7967070**  
To :**7981981**

### NOT ILLUSTRATED

<b>503054</b>	Tie- Nylon, Cable	<b>4</b>
<b>564550</b>	Instruction Sheet, Fabric Catcher	<b>1</b>
<b>569324</b>	Owners Manual	<b>1</b>
<b>569688</b>	Certificate of Conformity S16	<b>1</b>
<b>574146</b>	Decal, Noise- S16	<b>1</b>
<b>574156</b>	Decal, Hsg S16 200ST	<b>1</b>
<b>581413</b>	Decal, Handle- Power Drive	<b>1</b>
<b>582049</b>	Decal, Flap Caution	<b>1</b>

Item No	Part No	Description	Qty Req'd
1	<b>974189</b>	Handle-Upper, Upt S16 OPC Blk	1
2	<b>974186</b>	Bail Arm assembly- OPC, 16" Blk	1
3	<b>581658</b>	Cable- Engine, OPC Push On	1
4/4a	<b>583458</b>	Control-Throttle & Cable, Wescon	1
5	<b>503604</b>	*Screw, Pan M6 x 45 Poz	1
6	<b>501764</b>	*Nut, M6 Hex Nyloc x 6mm thick	1
7	<b>703856</b>	<b>Comfort Start Kit</b>	1
7a	<b>503794</b>	*Screw, Set M6 x 40	1
7b	<b>501764</b>	*Nut, M6 Hex Nyloc x 6mm thick	1
8	<b>779755</b>	<b>Cam Lock Assembly (1 per)</b>	2
8a	<b>580313</b>	*Lever- Handle Locking	1
8b	<b>503369</b>	*Pin, Tension 5.0 x 22	1
8c	<b>016777</b>	*Washer- Slipper S/S	1
8d	<b>583041</b>	*Stud- Handle Lock, 61mm	1
8e	<b>501793</b>	*Nut, M8 Hex Nyloc x 8mm thick	1
9	<b>501606</b>	Washer, Flat 8 x 18 x 1.6	2
10	<b>581527</b>	Retainer-Control Cable, Handle	1
11	<b>964491</b>	Handle-Lower, Stub S16 Black	2
11a	<b>503319</b>	Plug-22mm Black Plastic	2
12	<b>502107</b>	Screw, Set M8x20 BTN/HD	4
13	<b>501793</b>	Nut, Nyloc M8	4

When ordering PLEASE QUOTE PART NUMBER & Description, NOT Illustration No.

Determine right or left hand side from standing in operating position (standing at handle).

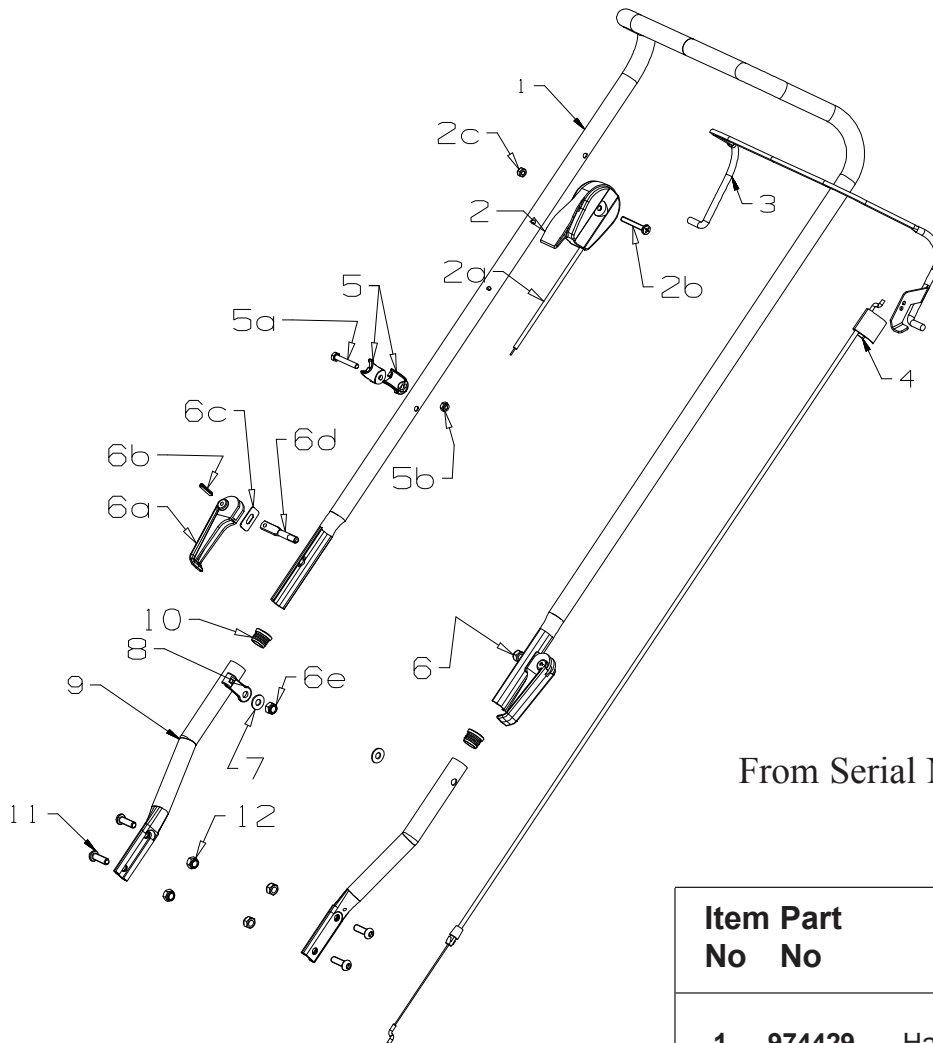
**Bold Text** = Assemblies, Bulleted Text \* = Items included in the Assemblies & may not be available as a spares item.



S16 150ST 3-in-1  
Powered by: B&S W16 Series 300

# Masport

Issue B.0  
ECN 03250  
March 2016 BH  
REF # 764923S



From Serial Number: **7981982**

### NOT ILLUSTRATED

<b>503054</b>	Tie- Nylon, Cable	<b>4</b>
<b>564550</b>	Instruction Sheet, Fabric Catcher	<b>1</b>
<b>569324</b>	Owners Manual	<b>1</b>
<b>569688</b>	Certificate of Conformity S16	<b>1</b>
<b>574146</b>	Decal, Noise- S16	<b>1</b>
<b>574156</b>	Decal, Hsg S16 200ST	<b>1</b>
<b>581413</b>	Decal, Handle- Power Drive	<b>1</b>
<b>582049</b>	Decal, Flap Caution	<b>1</b>

Item No	Part No	Description	Qty Req'd
<b>1</b>	<b>974429</b>	Handle-Upper, Upt OPC Black	<b>1</b>
<b>2/2a</b>	<b>583458</b>	<b>Control-Throttle, Wescon</b>	<b>1</b>
(Also Available : Handle 574398, Body 574430)			
<b>2b</b>	<b>503604</b>	*Screw, Pan M6 x 45 Poz	<b>1</b>
<b>2c</b>	<b>501764</b>	*Nut, M6 Hex Nyloc x 6mm thick	<b>1</b>
<b>3</b>	<b>981740</b>	Bail Arm Assy, OPC Black	<b>1</b>
<b>4</b>	<b>581658</b>	Cable- Engine OPC, Push On	<b>1</b>
<b>5</b>	<b>703856</b>	<b>Comfort Start Kit</b>	<b>1</b>
<b>5a</b>	<b>503794</b>	*Screw, Set M6 x 40	<b>1</b>
<b>5b</b>	<b>501764</b>	*Nut, M6 Hex Nyloc x 6mm thick	<b>1</b>
<b>6</b>	<b>779755</b>	<b>Cam Lock Assy MSV (1per)</b>	<b>2</b>
<b>6a</b>	<b>583041</b>	*Lever Handle Locking	<b>1</b>
<b>6b</b>	<b>503369</b>	*Pin, Tension 5.0 x 22	<b>1</b>
<b>6c</b>	<b>016777</b>	*Washer- Slipper S/S	<b>1</b>
<b>6d</b>	<b>583041</b>	*Stud- Handle Lock, 61mm	<b>1</b>
<b>6e</b>	<b>501793</b>	*Nut, M8 Hex Nyloc 8mm thick	<b>1</b>
<b>7</b>	<b>501606</b>	*Washer, Flat 8 x 19 x 1.6	<b>2</b>
<b>8</b>	<b>581527</b>	Retainer-Control Cable, Handle	<b>1</b>
<b>9</b>	<b>980692</b>	Handle-Lower, Stub Black	<b>2</b>
<b>10</b>	<b>503319</b>	Plug-22mm Black Plastic	<b>2</b>
<b>11</b>	<b>502107</b>	Screw,Set-M8 x 20 Btn/Hd	<b>4</b>
<b>12</b>	<b>501793</b>	Nut, Nyloc M8	<b>4</b>

When ordering PLEASE QUOTE PART NUMBER & Description, NOT Illustration No.

Determine right or left hand side from standing in operating position (standing at handle).

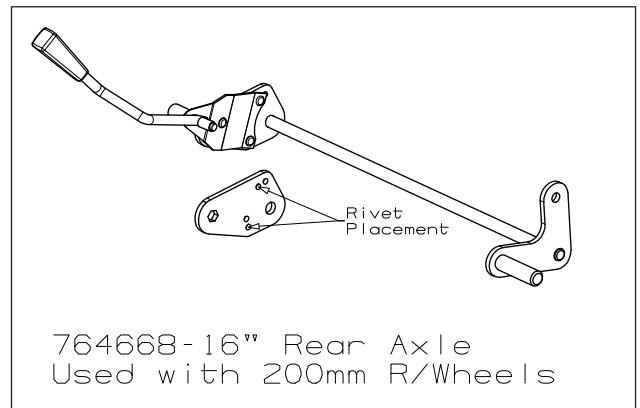
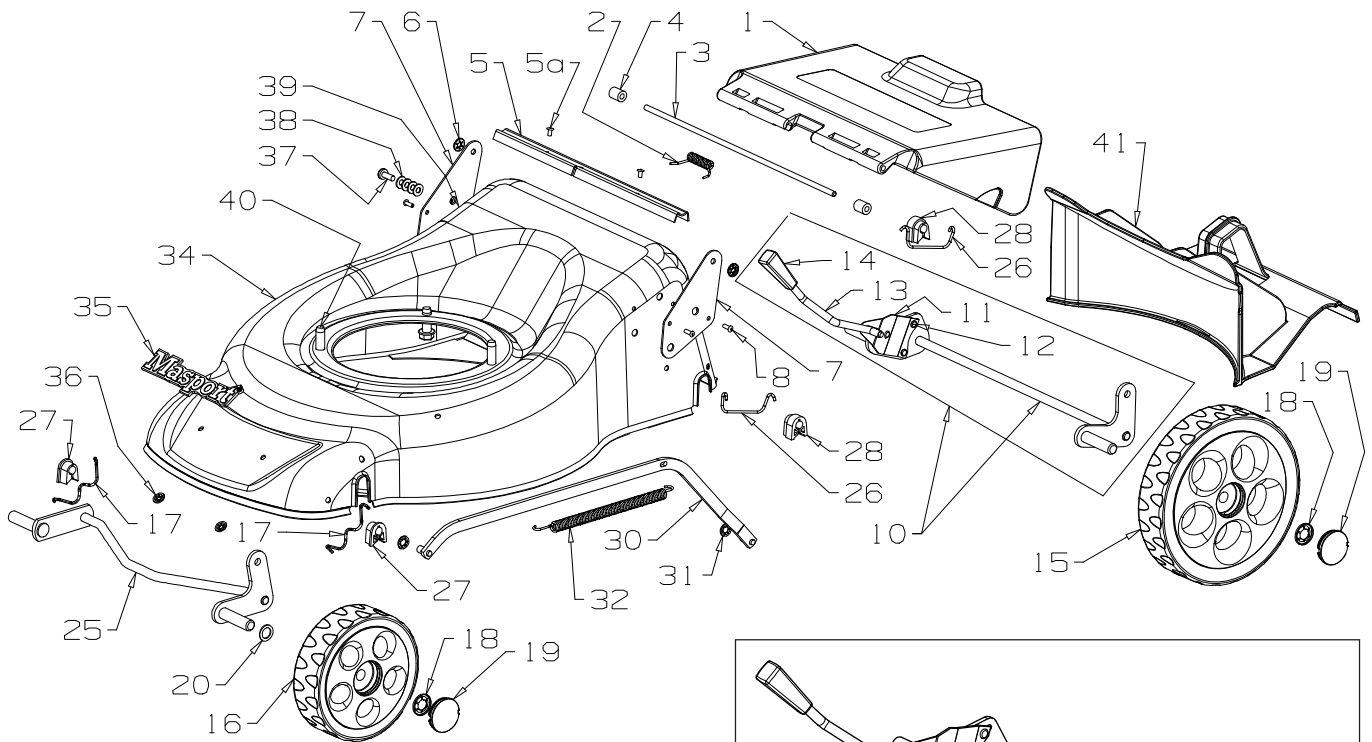
**Bold Text** = Assemblies, Bulleted Text \* = Items included in the Assemblies & may not be available as a spares item.



S16 150ST 3-in-1  
Powered by: B&S W16 Series 300

# Masport

Issue B.0  
ECN 03250  
March 2016 BH  
REF # 764923S



Item No	Part No	Description	Qty Req'd
1	564570	Flap- Mower, 16" F/Catcher Blk	1
2	581349	Spring-Flap, 19" STL	1
3	564503	Wire-Flap Pivot 335mm x 6mm	1
4	579733	Spacer-Flap	2
5	583151	Dust Seal-Flap	1
5a	581369	Rivet-Pop 4.0 Dia x 3.2 73SS5-2	2
6	503574	Clip-Starlock, 6 dia	2
7	564517	Bracket- Flap S16 Fab/Catch	2
8	501303	Rivet-Pop 4.0 Dia x 7.9 73AS5-5	4
10	764668	<b>Axle Assy-Rear,S16" (8" Wheels)</b>	1
11	580649	*Spring- Leaf	1
12	503373	*Rivet- F/HD 3/16x27/64"	3
13	564498	*Rod- Height Selector, 16" STL	1
14	580056	*Knob-Height Lever,7.9dia Sq Blk	1
15	579193	Wheel Assy-200, 5 Hole Graphite	2
16	579191	Wheel Assy-150, 5 Hole Graphite	2
17	529674	Retainer- Axle, Front "W"	2
18	503236	Clip-Starlock,1/2"	4
19	579194	Hub Cap- Button, 5 Hole Graphite	4

Item No	Part No	Description	Qty Req'd
20	503301	Washer, Flat 1/2 x 3/4 x 18g	1
25	564481	Axle Assy-Front,S16 6" Whl	1
26	579292	Retainer-Axle, Rear, Stl Deck	2
27	564499	Bush- Pivot,Axle Front S16	2
28	564500	Bush- Pivot,Axle Rear S16	2
30	564486	Rod Assy-Connecting, S16 STL	1
31	501365	Clip-Starlock, 5/16"	2
32	581463	Spring-Counter Balance	1
34	764510	<b>Hsg-Assy Stl 16" FS TTNM</b>	1
35	581240	Nameplate - Masport	1
36	503150	Clip-Starlock, 5dia	2
37	503331	Screw, Pan M6 X 16	1
38	501703	Washer, Flat 6 x 14 x 1.2	4
39	501764	Nut, M6 Hex (Inside housing)	1
40	580453	Screw; S/T 3/8 x 1-1/8" UNC Tri	3
41	564544	Insert- Mulching, 16"	1

When ordering PLEASE QUOTE PART NUMBER & Description, NOT Illustration No.  
Determine right or left hand side from standing in operating position (standing at handle).

**Bold Text** = Assemblies, Bulleted Text \* = Items included in the Assemblies & may not be available as a spares item.